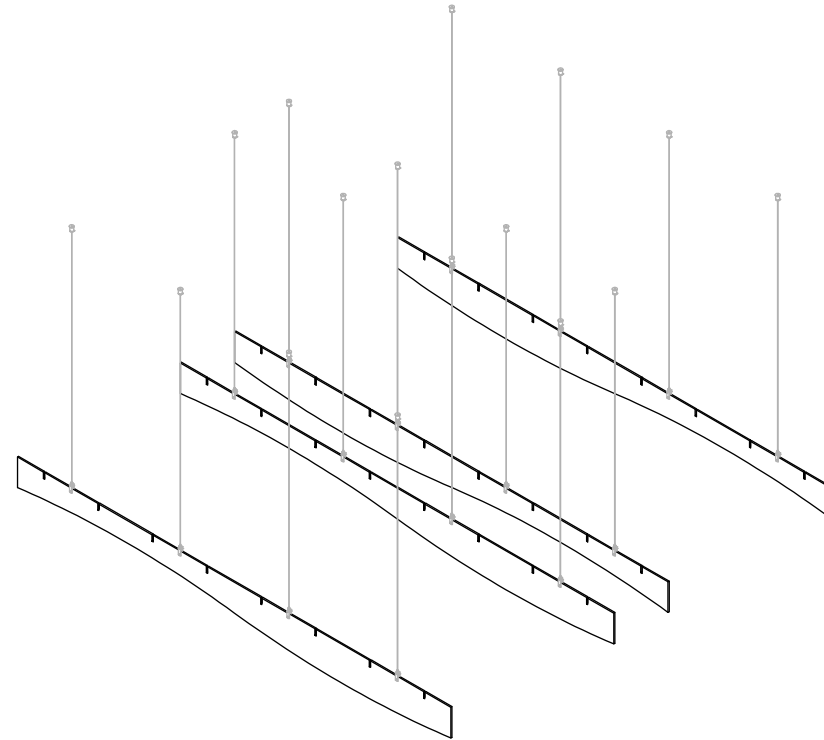
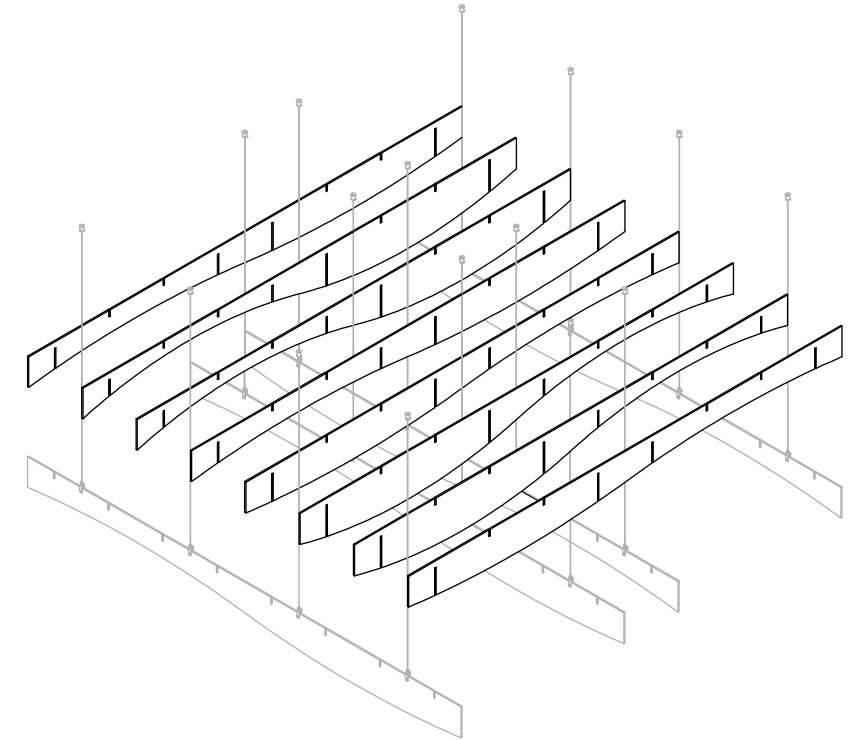


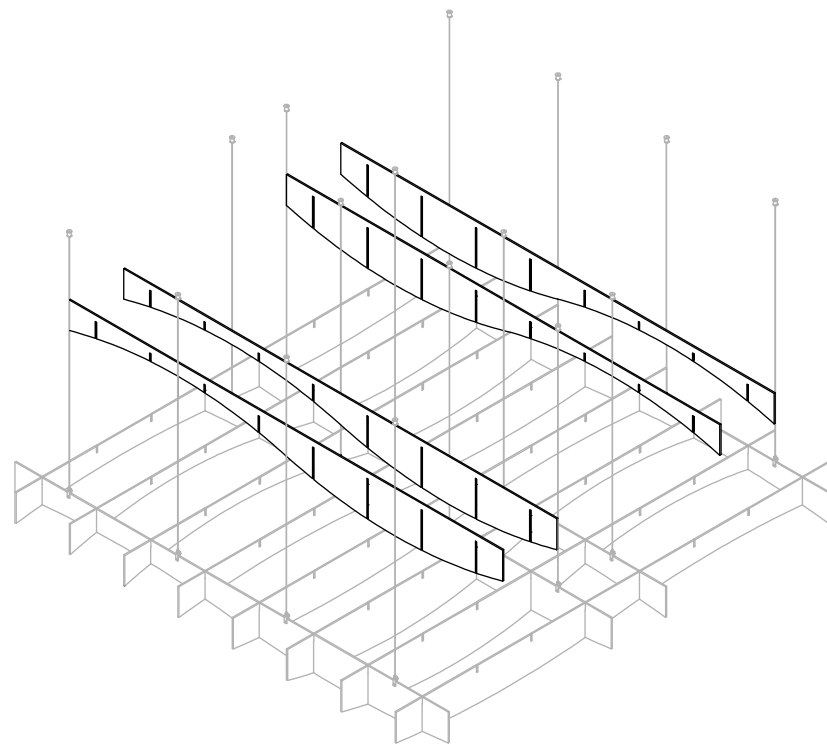
Step 1: Attach Hanging Kits to Deck



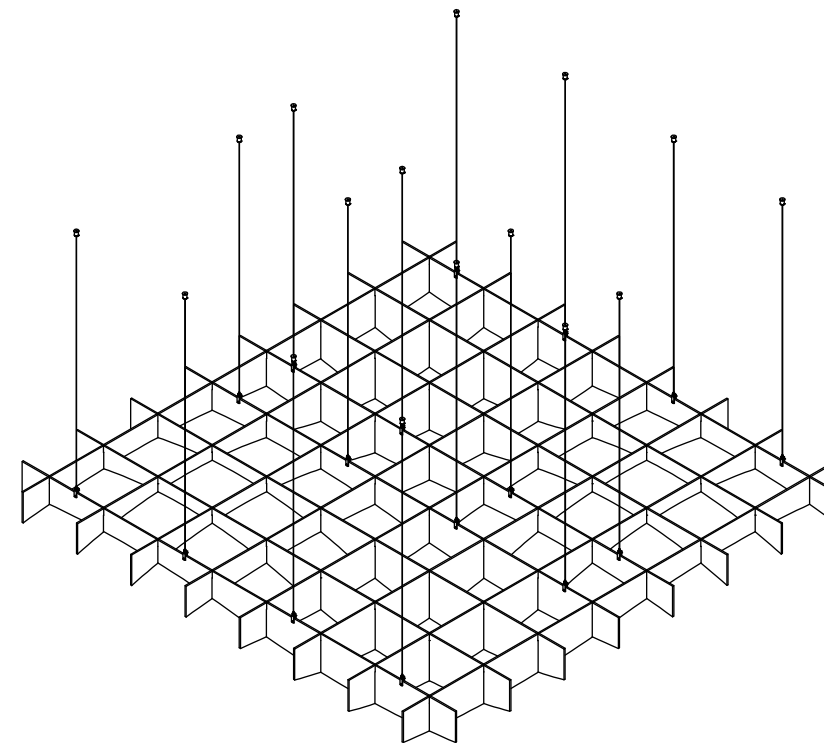
Step 2: Attach Bottom Panels to Hanging Kits



Step 3: Insert Mids Perpendicular to Bottom Panels



Step 4: Insert Top Panels Parallel to Bottoms



FeltWorks Open Cell
Installing Bottoms, Mids & Tops

DRAWN BY: MAD DATE: 3/18/2020 PD

These drawings show typical conditions which the Armstrong products depicted are installed. They are not a substitute for an architect's or engineer's plan and do not reflect the unique requirements of local building codes, laws, statutes, ordinances, rules and regulations (Legal Requirements) that may be applicable for a particular installation. Armstrong does not warrant, and assumes no liability for the accuracy or completeness of the drawings for a particular installation or their fitness for a particular purpose. The user is advised to consult with a duly licensed architect or engineer in the particular locale of the installation to assure compliance with all legal requirements. Armstrong is not licensed to provide professional architecture or engineering design services.