

Tectum Baffles
 Square Ends and Edges or Bottom Edge with 1/4" by 1/4" Bevel on Each Face.

Tolerances on Width
 Specified, +0", -1/8"
 Maximum Recommended 48"

Tolerances on Height
 Specified, +0", -1/8"

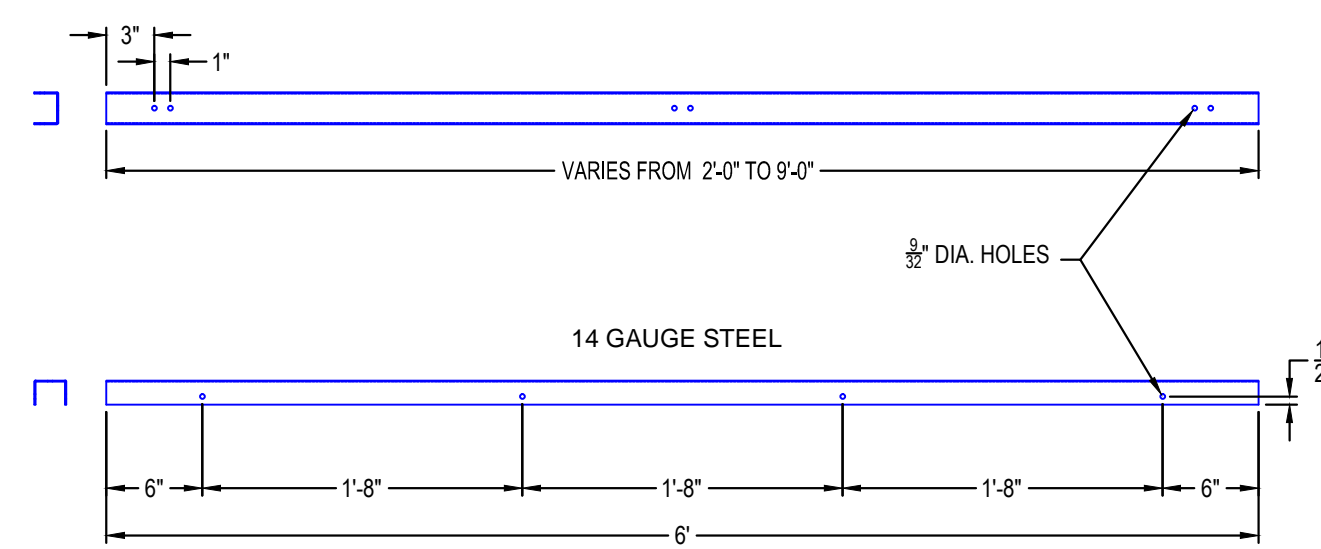
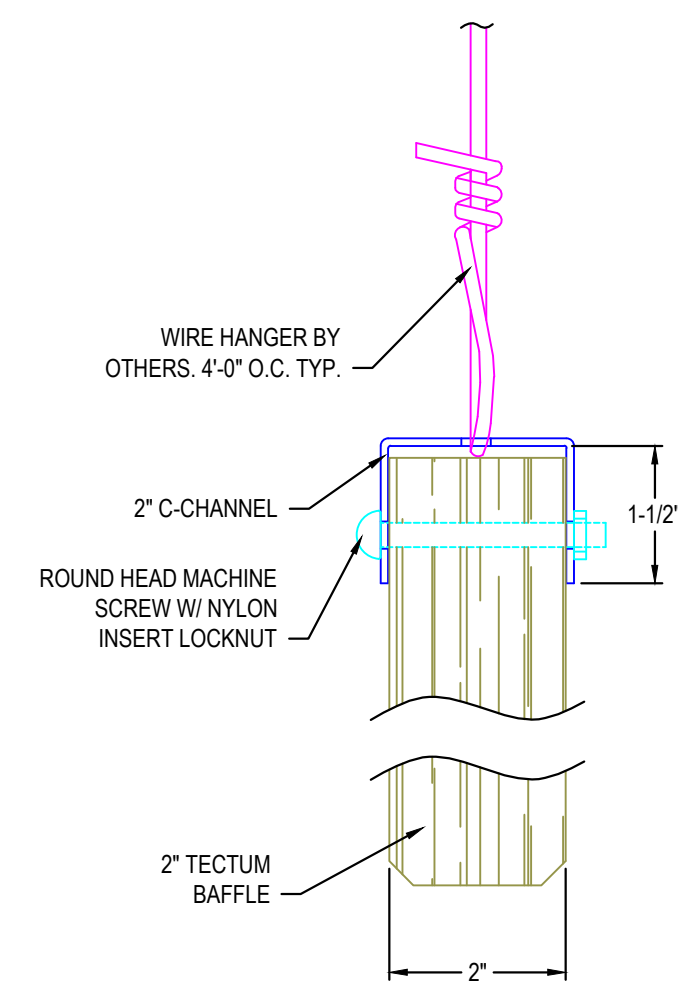
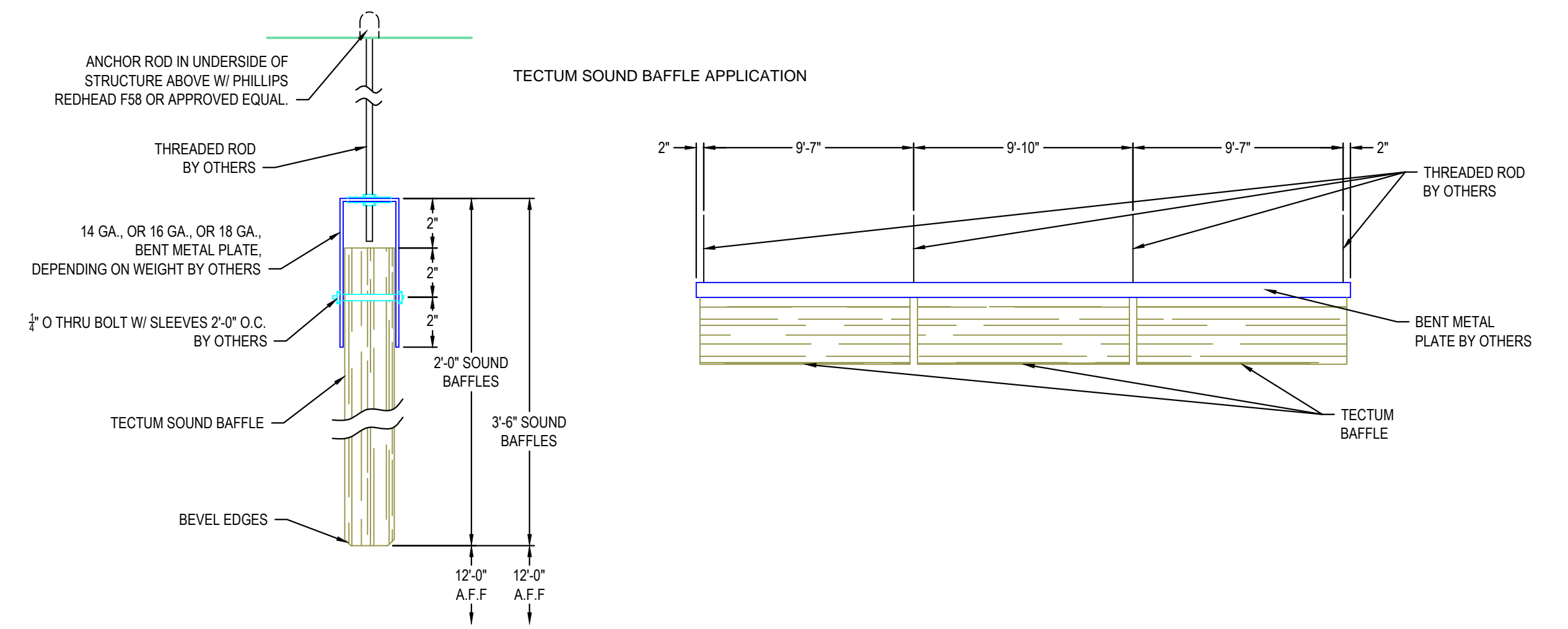
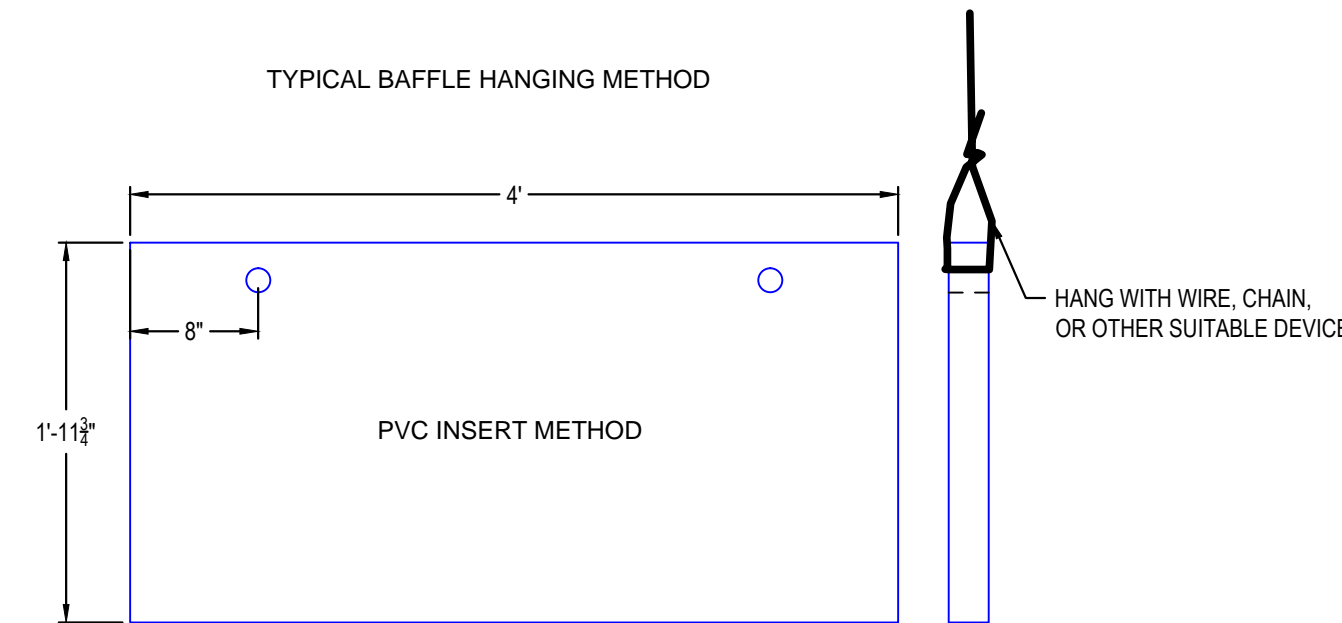
Tolerances on Route
 + or - 1/32"

Tolerances on Thickness
 + 1/16", -1/8"

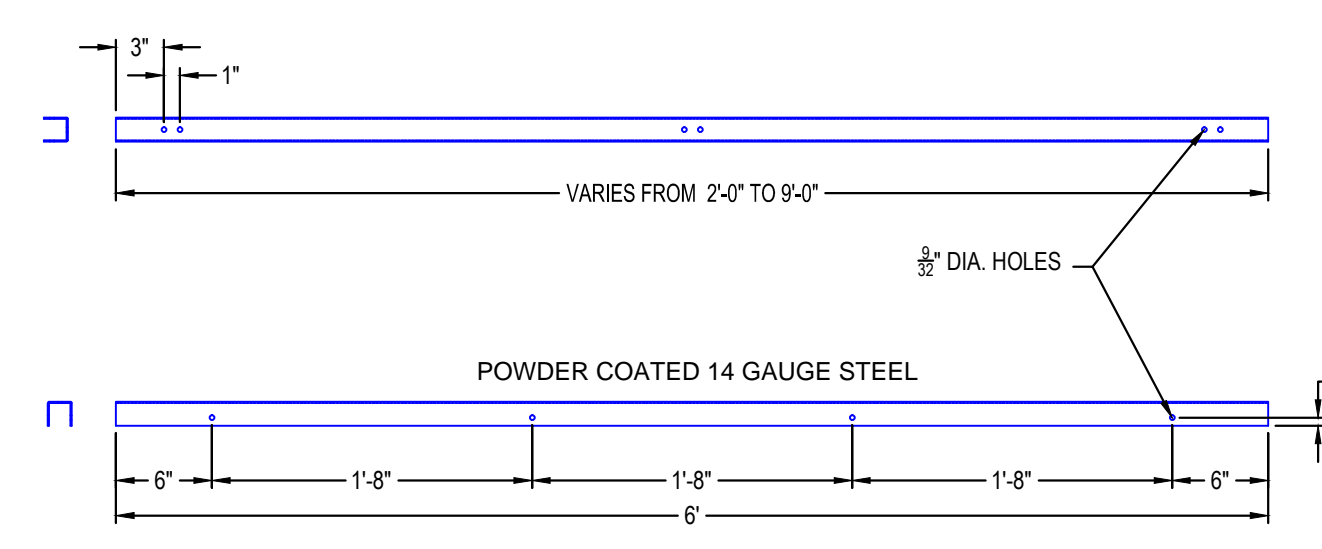
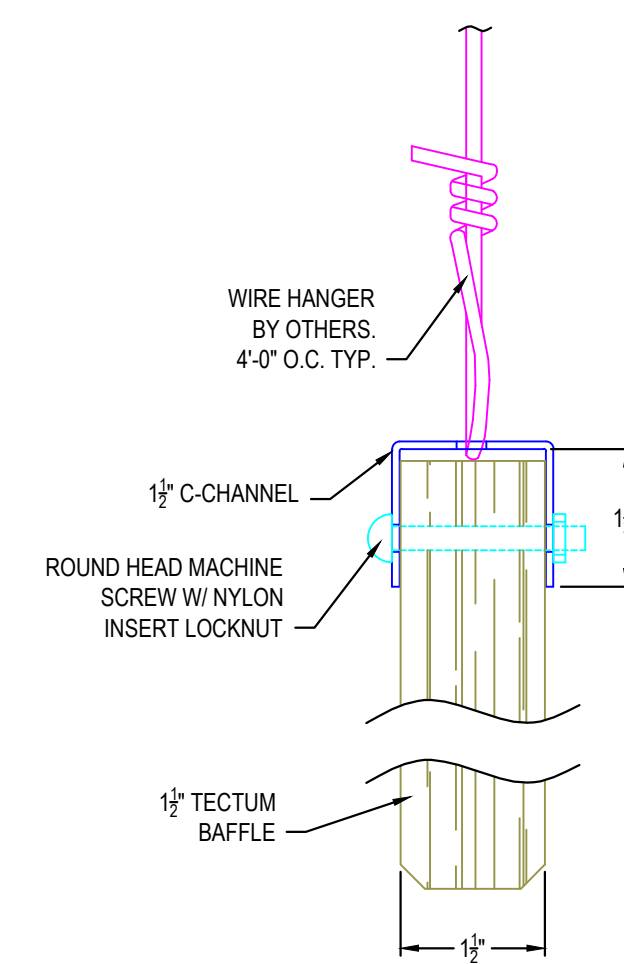
Minimum MOR Requirements

1"	275 psi
1-1/2"	275 psi
2"	275 psi

Heights
 Maximum 24"
 Standard Height
 23 - 3/4"



NOTE:
 HOLE LOCATIONS VARY ACCORDING TO CHANNEL LENGTH



NOTE:
 HOLE LOCATIONS VARY ACCORDING TO CHANNEL LENGTH

These drawings show typical conditions in which the Armstrong product depicted is installed. They are not a substitute for an architect's or engineer's plan and do not reflect the unique requirements of local building codes, laws, statutes, ordinances, rules and regulations (Legal Requirements) that may be applicable for a particular installation.		PROJECT NAME: ARMSTRONG TECTUM BAFFLES AND BLADES	
Armstrong Ceiling Solutions does not warrant, and assumes no liability for the accuracy or completeness of the drawings for a particular installation or their fitness for a particular purpose.		DWG. NO. 1028, 1051, 1053, 1066, 1067	REV: . . . DATE: . . .
The user is advised to consult with a duly licensed architect or engineer in the particular locale of the installation to assure compliance with all Legal Requirements.		DATE: 7/3/17	SCALE: . . .
Armstrong is not licensed to provide professional architecture or engineering design services.		DRAWN BY: MAP	CHK BY: . . .
TechLine		ARMSTRONG CEILING SOLUTIONS * Lancaster, PA * Phone: 877-ARMSTRONG	
		Armstrong CEILING SOLUTIONS	