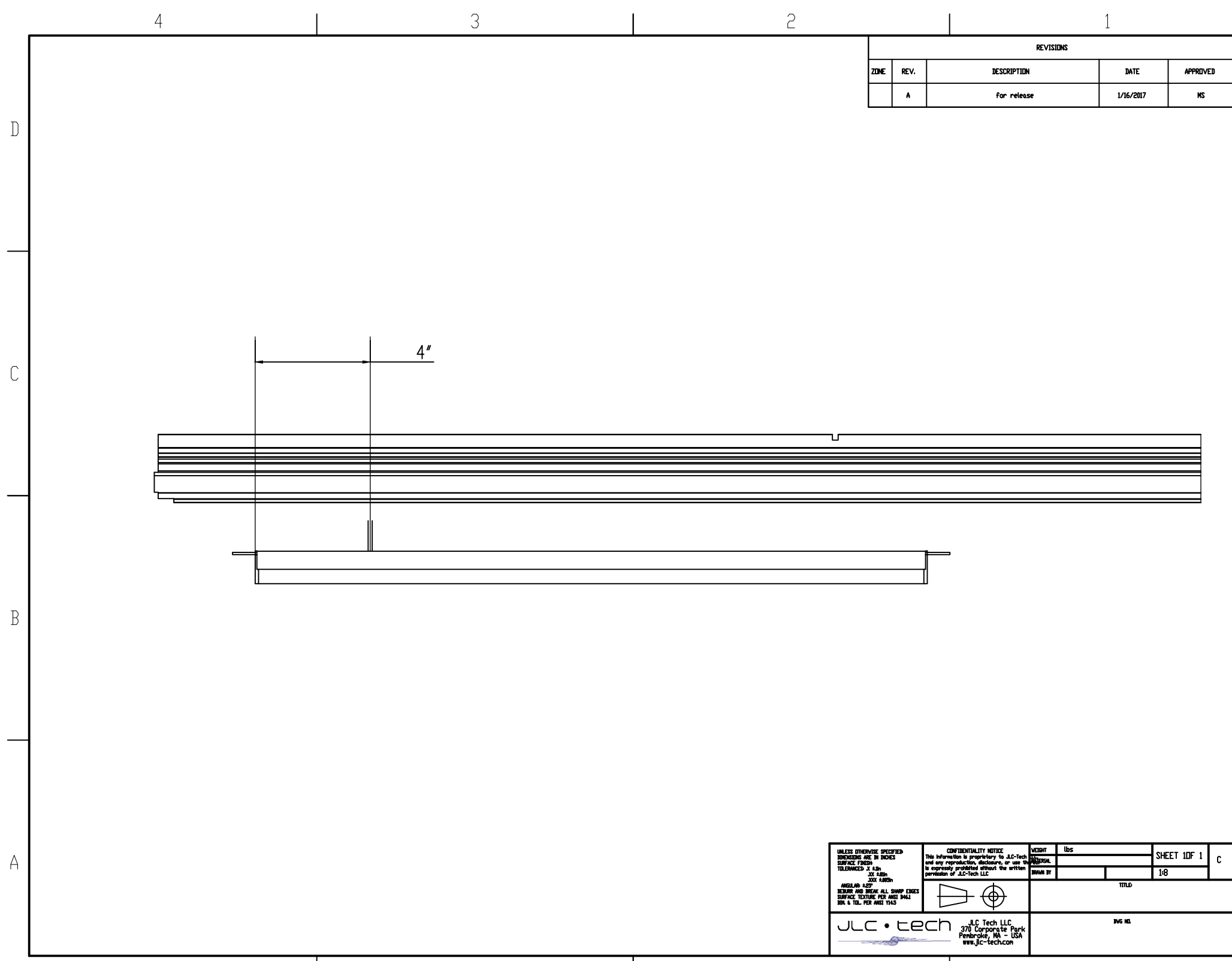
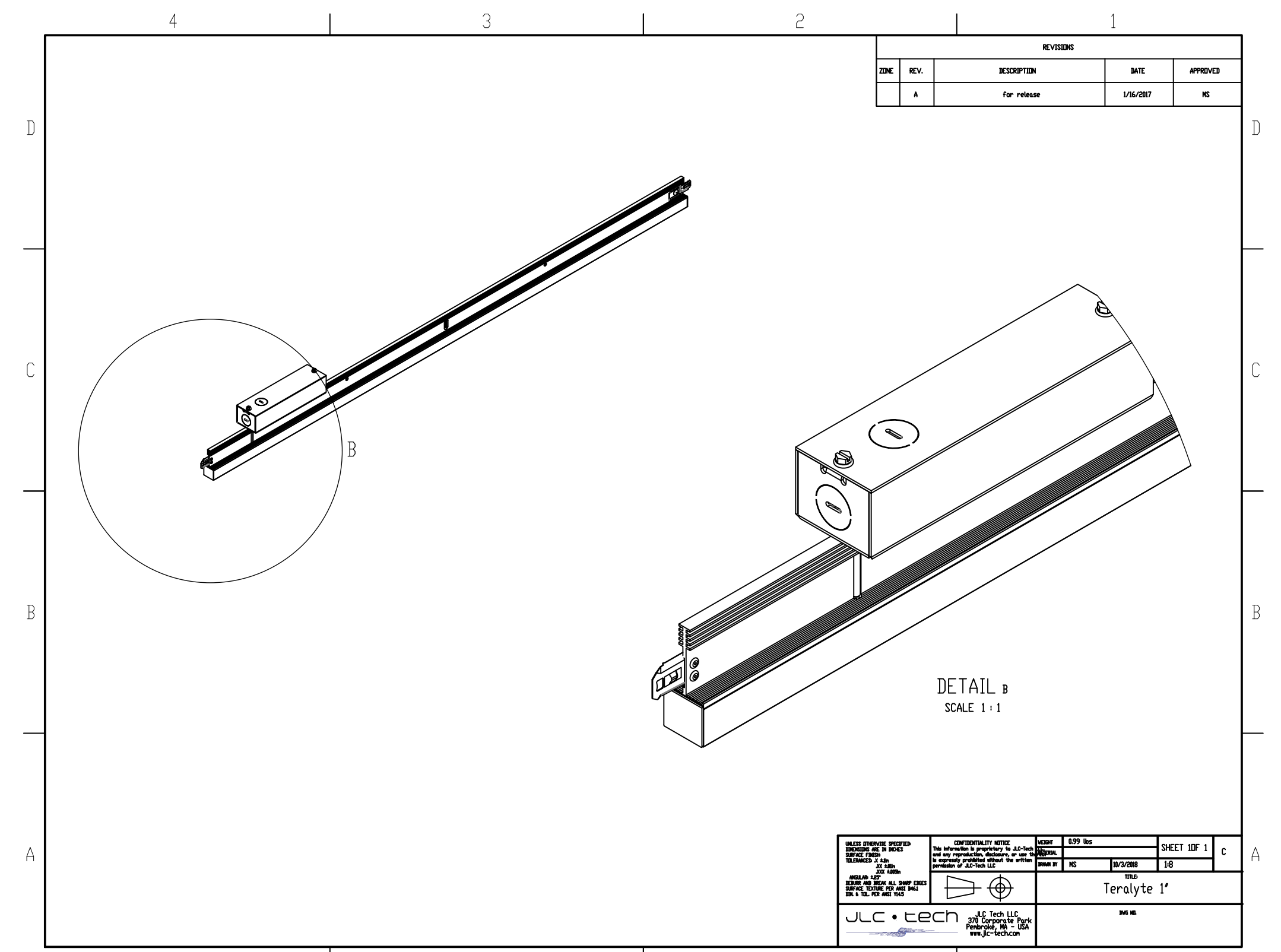


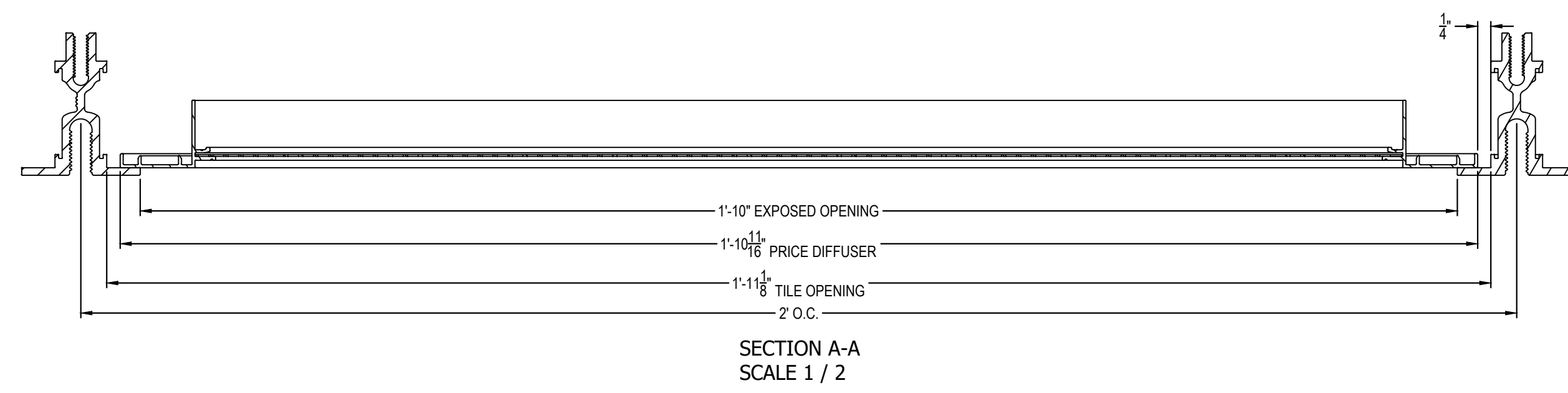
JLC TECH TERALYTE FOR DYNAMAX 2" EXPLODED ASSEMBLY VIEW



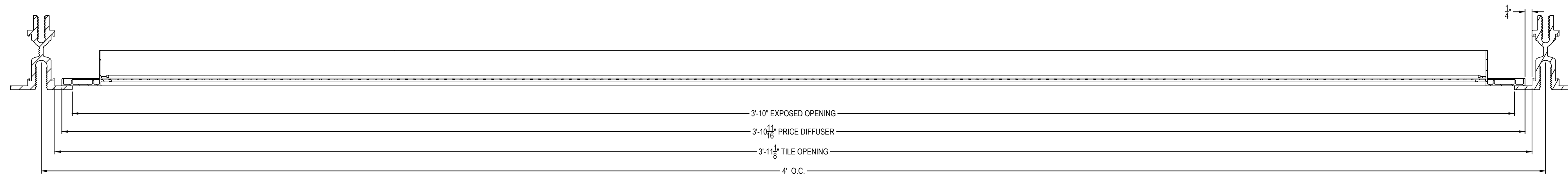
JLC TECH TERALYTE FOR DYNAMAX 2" SIDE VIEW - WIRE LOCATION



JLC TECH TERALYTE FOR PRELUDE MAX 1" VIEW

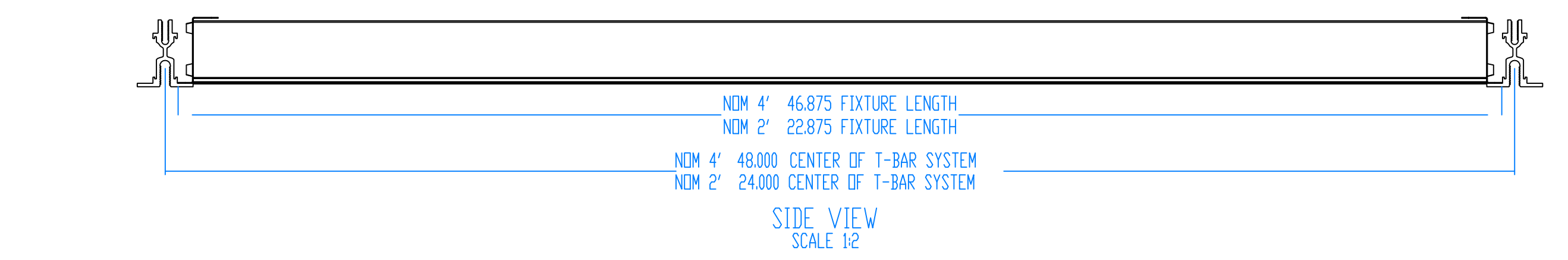
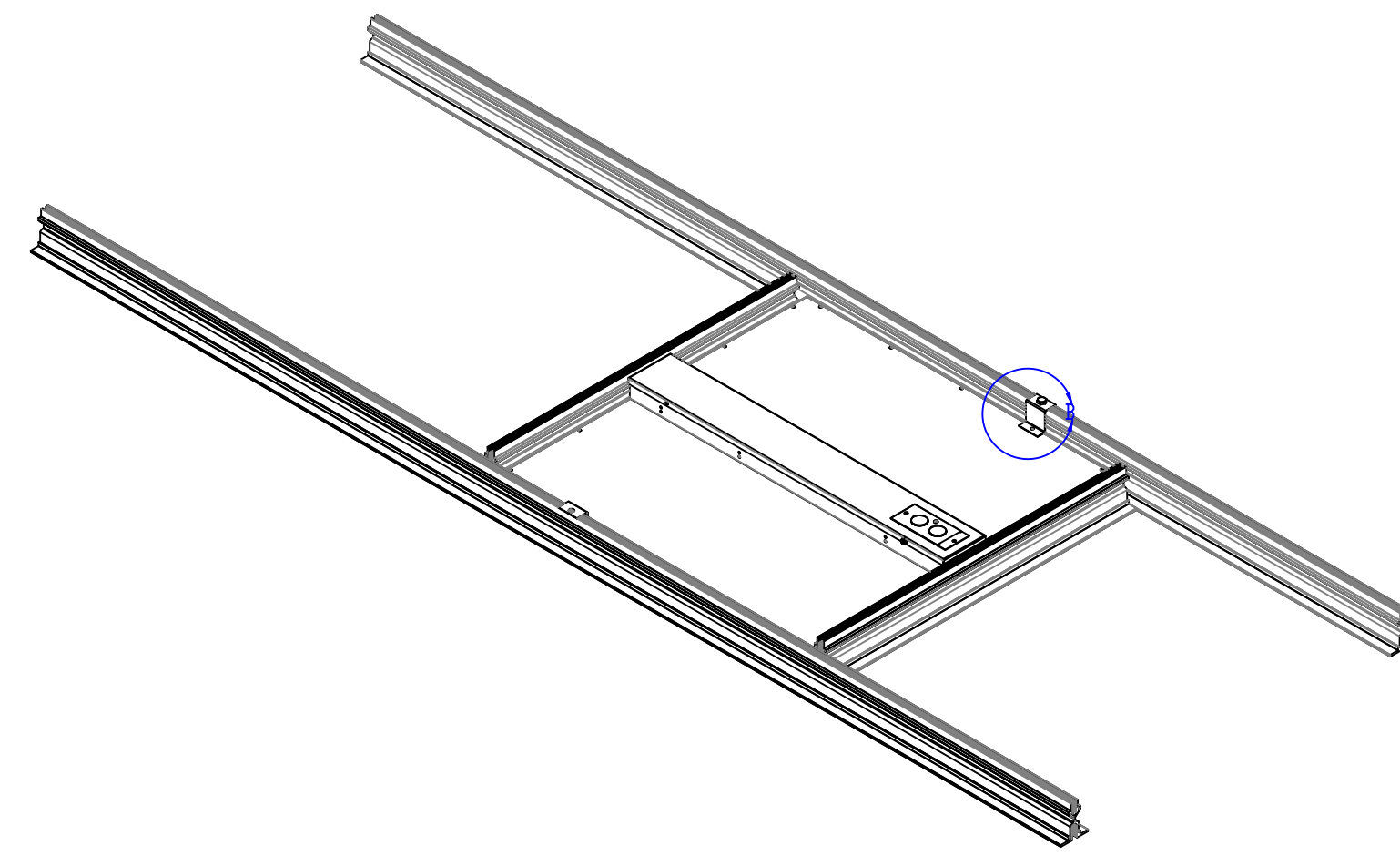
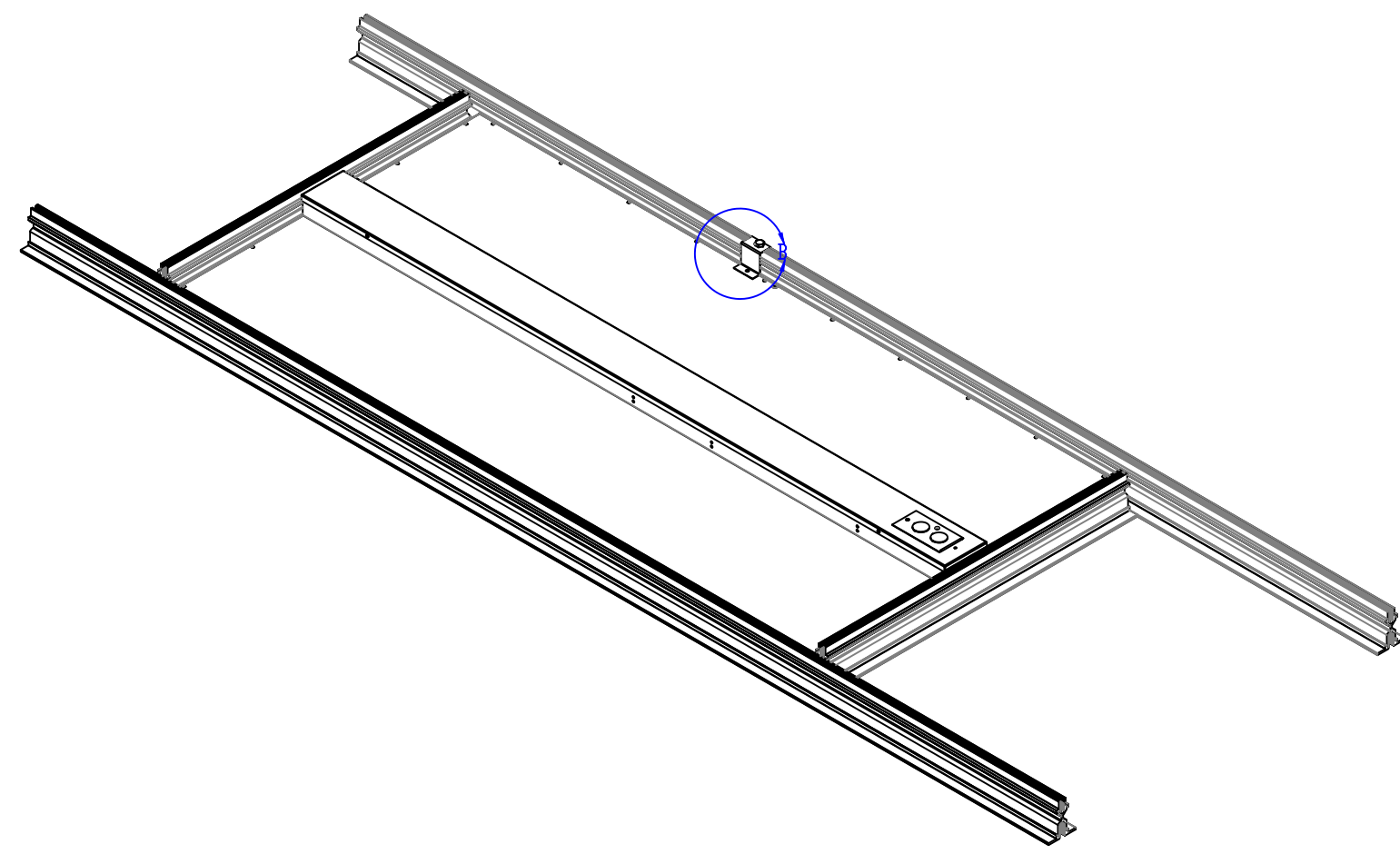


SECTION A-A
SCALE 1/2

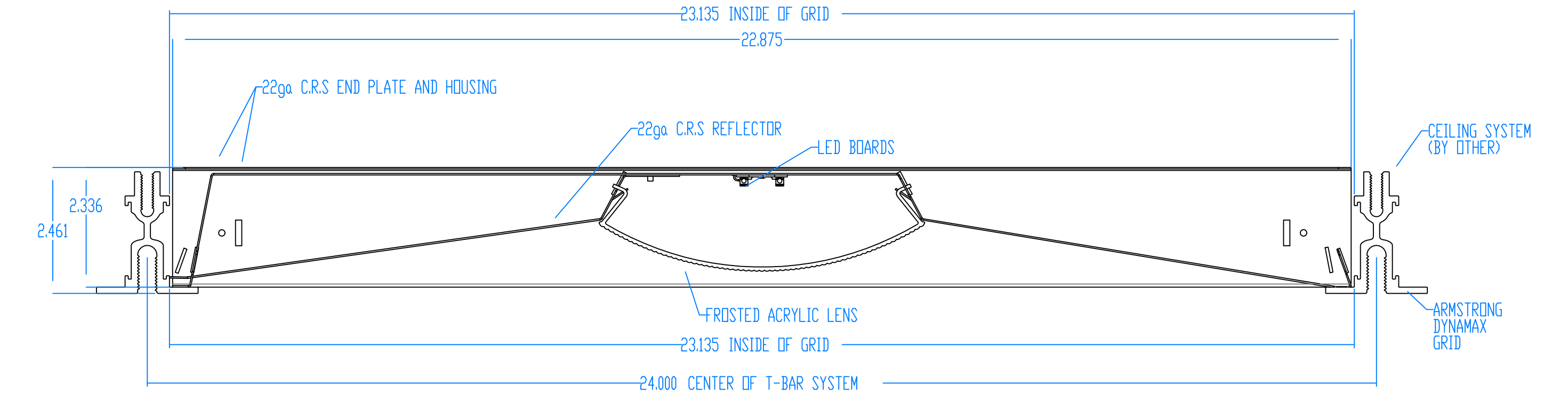


SECTION B-B
SCALE 1/2

DYNAMAX AND PRICE DIFFUSER INTEGRATION



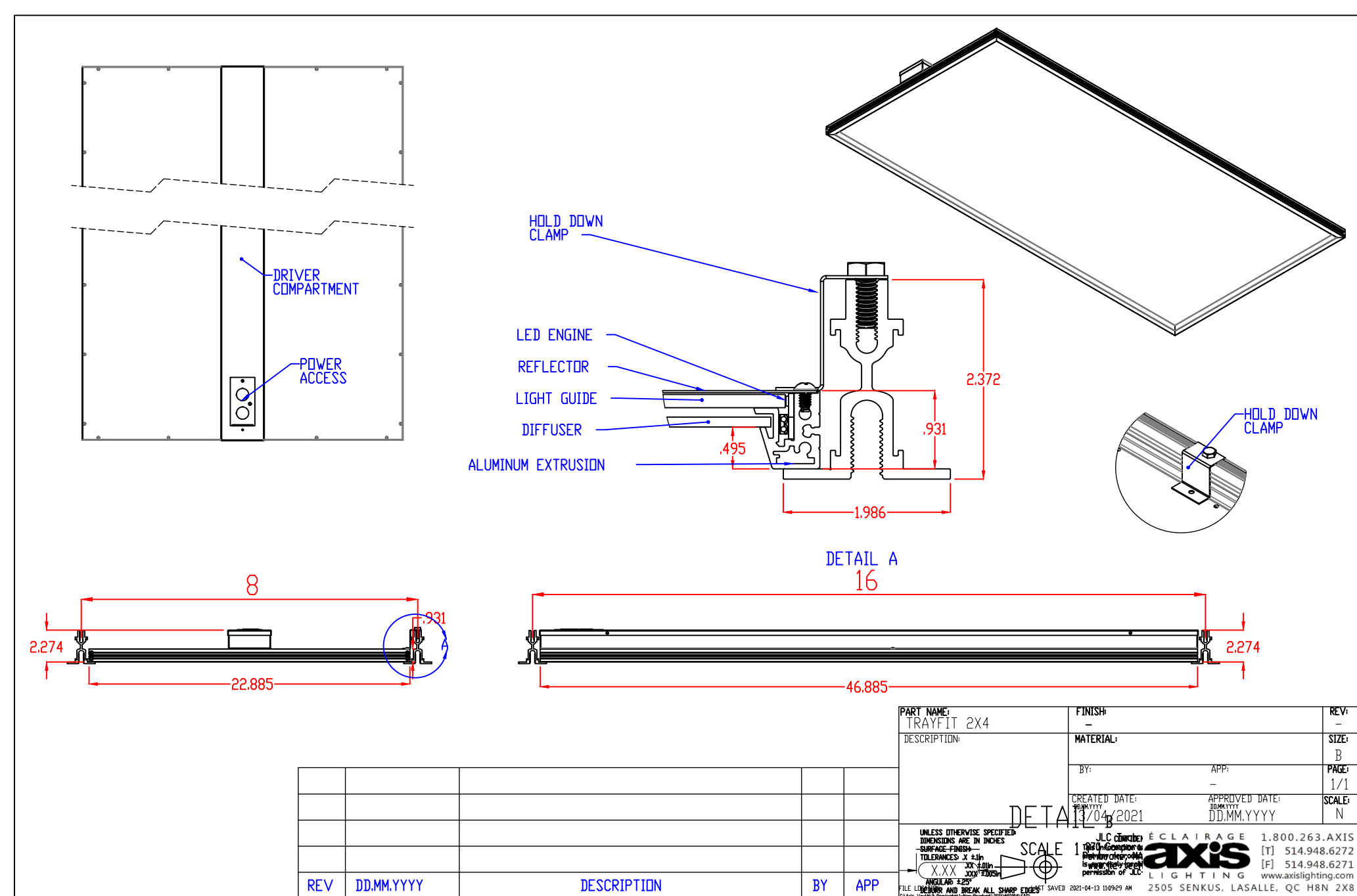
SIDE VIEW
SCALE 1/2



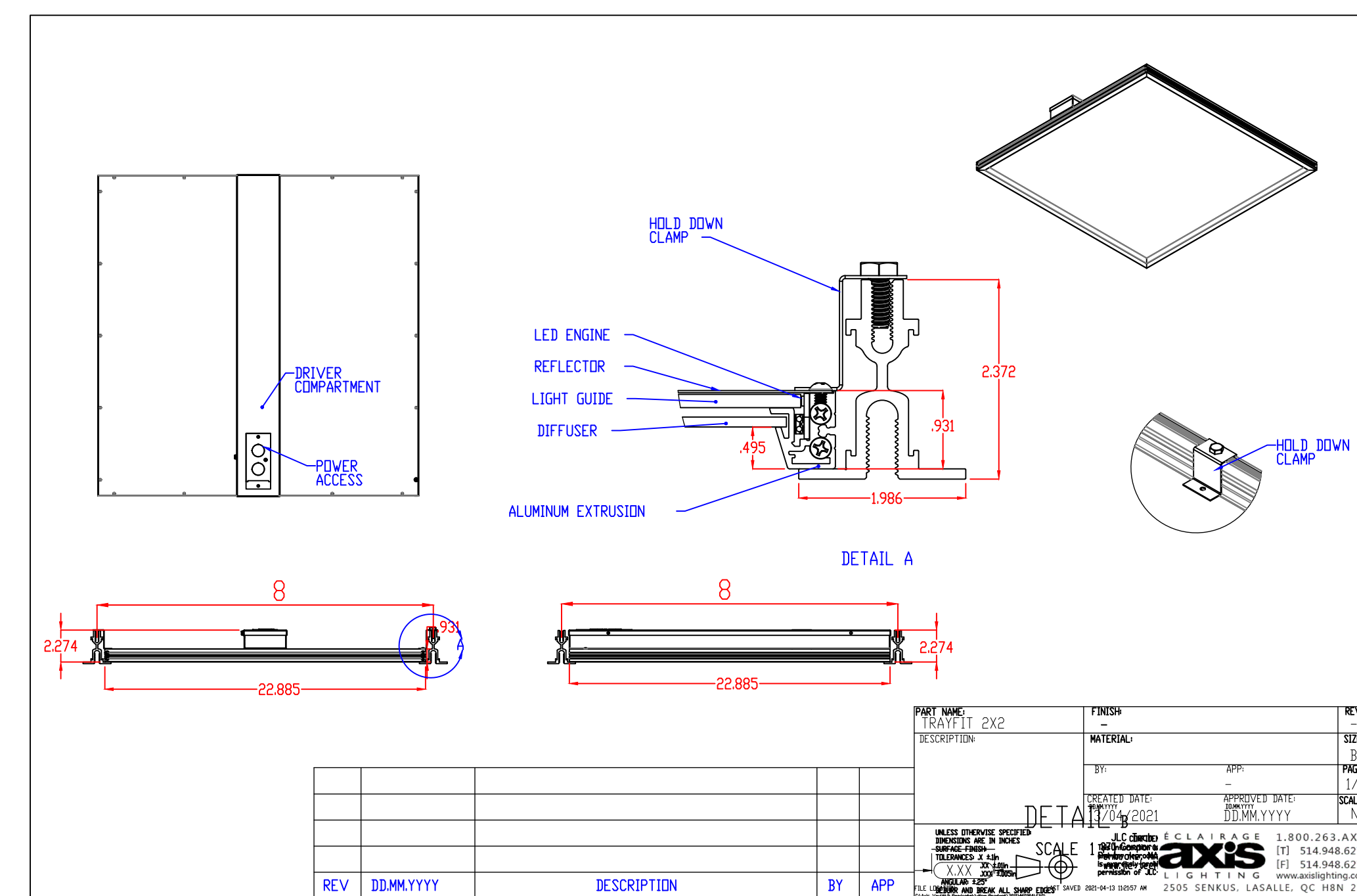
CROSS SECTION
SCALE 1/4

HE WILLIAMS PTDC TROFFER FOR DYNAMAX

HE WILLIAMS, INC.
155 WEST LANTANA AVE.
MESA, AZ 85202
977-514-1100/977-84-3044668
RECESS LED GRID FIXTURE TO
FIT IN ARMSTRONG DYNAMAX GRID



AXIS TRAYFIT 2'x4'



AXIS TRAYFIT 2'x2'

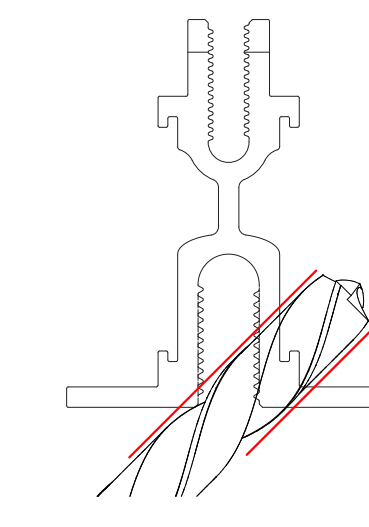
Armstrong DYNAMAX™ Clip (DM)

Step 1: Drill Wire Routing

Check width of your ZipTwo to ensure opening will be visually covered by rail. ZipTwo power harness is located 3" from end (see page 2). Consult system layout to ensure proper power harness locations.

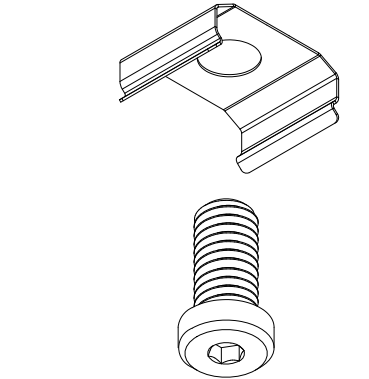
DRILL 0.5" (12.7mm) opening at a 45° angle, as shown below.

Be sure to de-burr hole to ensure no damage is done to power harness.



Step 2: Assemble Clips

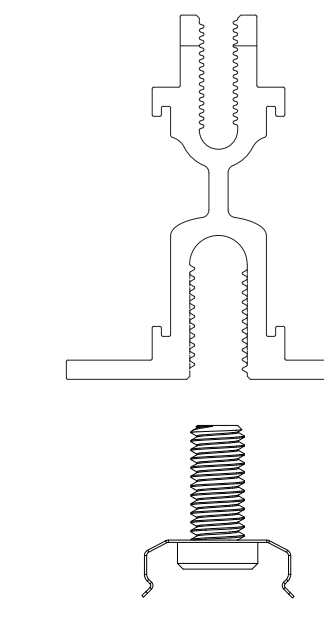
Assemble the clip, as shown below, by installing supplied screw into clip opening.



Step 3: Install Clips

Using a 3/16" hex key, install all clips to installed suspended ceiling system. DO NOT over tighten as this could deform the clip and not allow for installation.

Fixtures will be supplied with two clips for rails under 48", four clips for rails 48" to 72" and six clips for 96" rails. Position two clips 4" (102mm) from each end of the fixture and evenly space the remaining clips.

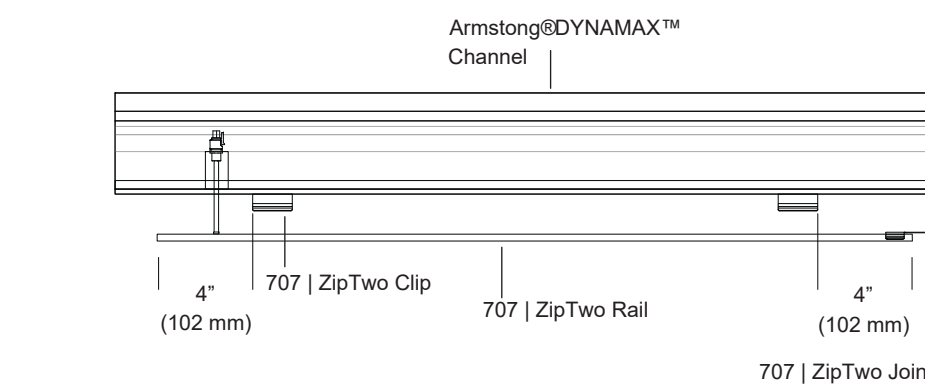
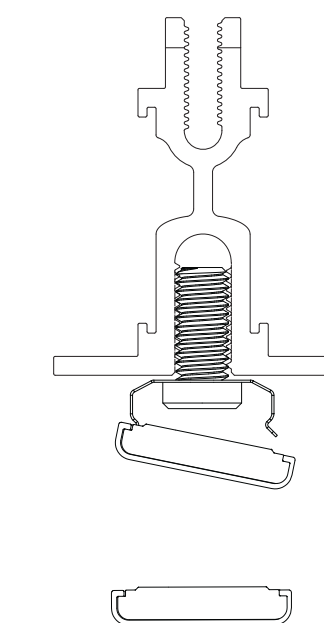


Step 4: Install Fixture

Determine fixture wire harness location and notch T-Bar/Panel, as necessary. Install driver and wiring per instructions (see appendix). Connect fixture wire harness to power wire harness. Insert fixture onto installed clips by inserting back edge of fixture to installed clips, then carefully snapping front edge on.

For multi-rail systems, see ZipTwo Joiner, page 2.

NOTE: Be careful with fixture orientation for the 85° Asymmetric ZipTwo Fixture. For 85° optics, power feed is located on the left side of the fixture, when facing the illuminated surface. See page 2 for more information.



VODE ZIPTWO SUSPENDED GRID MOUNT