

NOTES:
 THE EXAMPLE LAYOUT AND CORRESPONDING BOM SHOWN ARE MEANT TO BE USED AS REFERENCE POINTS WHEN SPECIFYING A DESIGNFLEX SYSTEM.
 IF YOU PLAN TO USE THE EXACT LAYOUT SHOWN, OR ANY VARIATION THEREOF, CONSIDER THE FOLLOWING NOTES:

- 1) DRAWING DETAILS SHOW A CEILING PLAN VIEW WHICH IS FROM A PLENUM POSITION LOOKING DOWN ONTO THE BACKSIDE OF THE CEILING SYSTEM.
- 2) ALL MAIN BEAM SPLICE CONNECTIONS SHOULD BE STAGGERED ACROSS THE INSTALLATION WITH ALIGNED ROUTE HOLES.
- 3) SCREWS, RIVETS, AND OTHER GENERAL FASTENERS THAT ARE NOT INCLUDED IN BOM OR IN DETAILS BELOW, NEED TO BE SUPPLIED BY OTHERS. REFER TO INSTALLATION INSTRUCTIONS FOR DETAILS ON REQUIRED FASTENERS.
- 4) HANGER WIRE LOCATIONS SHOWN BELOW ARE ONLY SUGGESTIONS BASED ON EXAMPLE LAYOUT AND MATERIALS AND CAN BE MOVED AS LONG AS THEY ARE IN ACCORDANCE WITH ASTM C636 AND PRODUCT SPECIFIC INSTALLATION INSTRUCTIONS.
- 5) CONDITIONS SHOWN ARE FOR NON-SEISMIC INSTALLATIONS (SEISMIC DESIGN CATEGORY A, B) - REFERENCE INSTALLATION INSTRUCTIONS FOR CONSIDERATIONS AND REQUIREMENTS FOR SEISMIC INSTALLATIONS.
- 6) DETAILS BELOW AND BOM ARE SUBJECT TO CHANGE BASED ON PRODUCT SPECIFIC INSTALLATION INSTRUCTIONS AND CHANGES AT THE PERIMETER RELATED TO THE LAYOUT (LINEAR FEET OF PERIMETER, FULL SIZE VS. CUT PANELS, BORDER PANEL AND SUSPENSION INSTALLATION METHOD).
- 7) 7800 WALL ANGLE PERIMETER SHOWN BELOW. REFERENCE INSTALLATION INSTRUCTIONS FOR DETAILS ON ALTERNATIVE PERIMETER SOLUTIONS.
- 8) BOM DOES NOT ACCOUNT FOR THE USE OF SCRAP OR EXCESS MATERIAL CUT FROM OTHER ITEMS.

SR-0003-4 BILL OF MATERIALS			
ITEM	QTY	STOCK NUMBER	DESCRIPTION
1	16	7800	Angle Molding
2	76	7500/7501	12" ID/HD Suprafine Main Beam
3	135	XL7520	2' Suprafine Cross Tee
4	36	8357PB	LyraPB 9/16 Sq Tegular - 24 x 48 x 1"
5	40	8381PB	LyraPB 9/16 Sq Tegular - 24 x 72 x 1"
6	42	8382PB	LyraPB 9/16 Sq Tegular - 24 x 96 x 1"
7	37	8365PB	LyraPB 9/16 Sq Tegular - 24 x 60 x 1"
8	52	435	Stabilizer Clip
9	154	STAC	Single Tee Adapter Clip
10	190	7891	12 Gauge Hanger Wire (Qty. = number of min. hanging point locations)

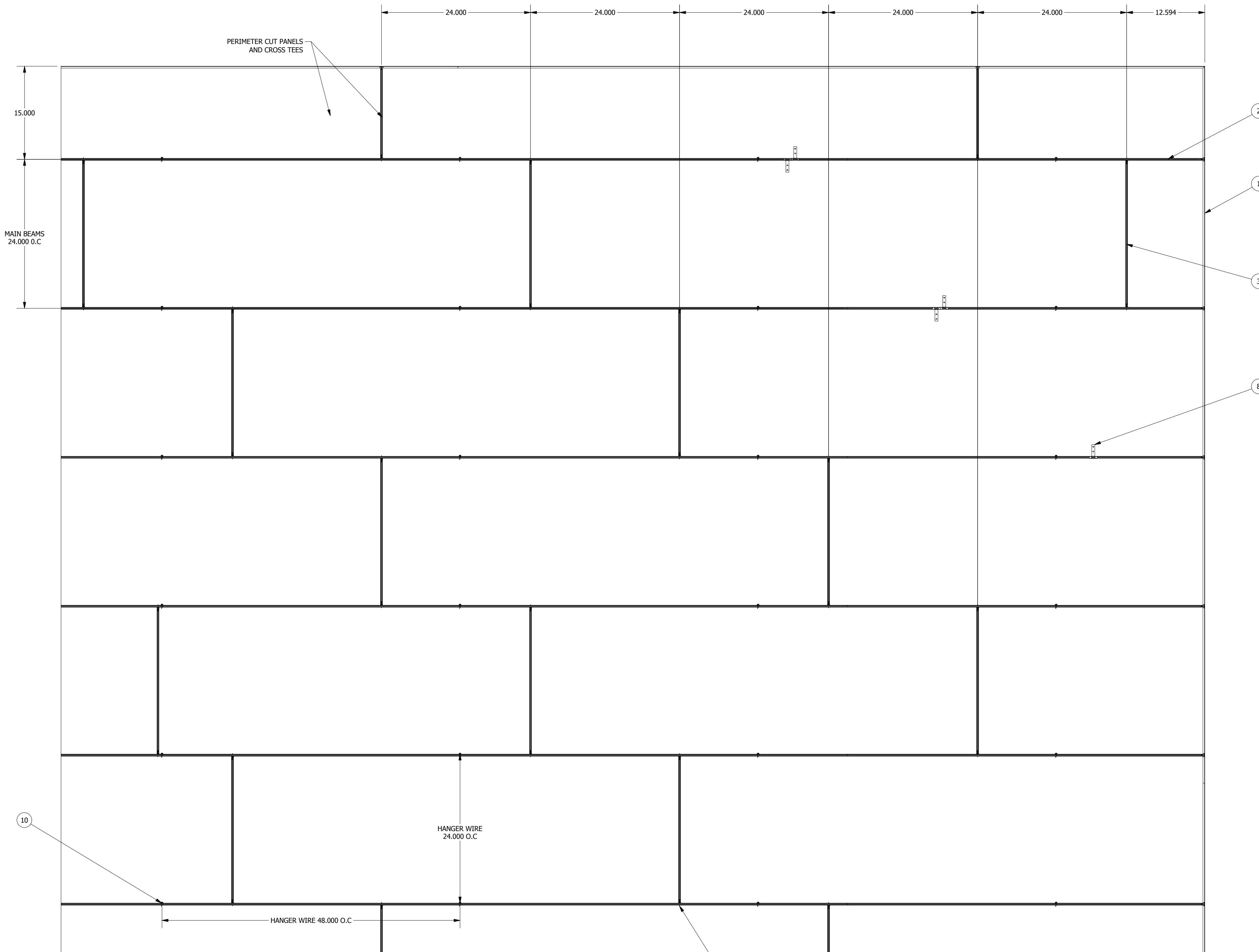
EXAMPLE LAYOUT AND BOM SHOWN WITH LYRA PANELS AND SUPRAFINE SUSPENSION SYSTEM. REFER TO PRODUCT SPECIFIC INSTALLATION INSTRUCTIONS FOR DETAILS ON ALL REQUIRED COMPONENTS.

PANEL PRODUCT FAMILIES COMPATIBLE WITH THIS LAYOUT:
 LYRA AND OPTIMA

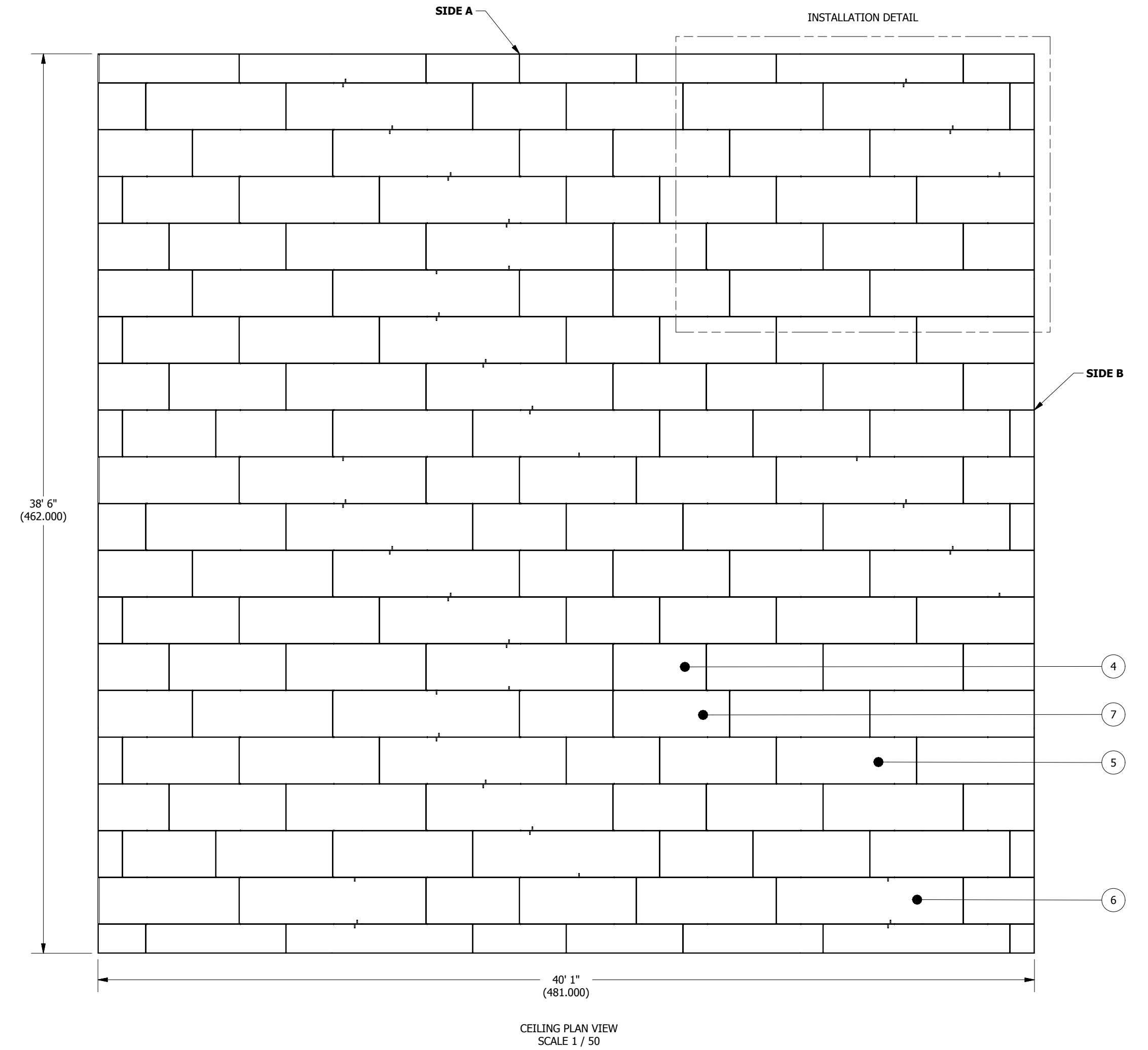
SUSPENSION SYSTEMS COMPATIBLE WITH THIS LAYOUT:
 SUPRAFINE ID/HD AND PRELUDE ID/HD

SIDE A - REPRESENTS A BORDER CONDITION UTILIZING FIELD CUT PANELS AND GRID
SIDE B - REPRESENTS A BORDER CONDITION UTILIZING FULL SIZE AND FIELD CUT PANELS

REFERENCE INSTALLATION INSTRUCTIONS FOR FURTHER DETAILS ON HOW THESE BORDER CONDITIONS ARE FINISHED



INSTALLATION DETAIL
 SCALE 1 / 10



CEILING PLAN VIEW
 SCALE 1 / 50